

## EQUIPPING ORGANIZATIONS & INDIVIDUALS with OurREACH™

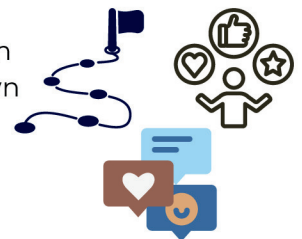
This “strengths-based” software platform/app equips individuals & families in challenging situations, to help them thrive in ways they seek -- in health, housing, jobs, parenting, & more. Examples include foster youth programs, reentry, substance use disorder recovery, food security, maternal care, & more.

**CUSTOMERS:** Social Service & Healthcare Provider Organizations subscribe to the collaborative OurREACH™, then supply log-ins to their clients/patients -- plus any staff/mentors.



- **APPROACH:** OurREACH™ HIPAA-compliant collaborative software app & platform equips both the clients/patients & the staff/mentors, supporting their relationship. It robustly empowers the clients/patients to work on their desired milestones & saves time for the staff/mentors walking alongside them.
- **MANY DEVICES:** It can be used on smartphones, tablets, laptops, etc.

- **ENGAGEMENT:** OurREACH™ engages clients/patients to work on personalized milestone “road-maps” with integrated, local, & relevant resources. The app/platform includes secure AI & communication with their staff/mentors. They can set their own milestones & choose to receive “jumpstart” milestones from staff/mentors.
- **CUSTOMIZATION:** OurREACH™ can be easily customized (if the organization chooses to do this), e.g., for milestones, resources, inspirational elements, & surveys.
- **LANGUAGES:** It can be used in over 100 languages, to facilitate communication.



- **IMPROVED OUTCOMES:** This helps individuals & families improve their health (including nutrition & mental well-being), jobs, housing, education, financial literacy, & other life situations. It also supports parenting, saves staff time, & lowers healthcare costs, by addressing both health & Social Drivers of Health.
- **DATA ANALYTICS & INTEGRATION:** OurREACH™ provides granular data analytics, incl. “between visits,” about participants’ progress -- to help improve programs & report to funders. It seamlessly integrates into organizations’ workflows & Electronic Health / Case Mgmt. tools. It can also stand alone.
- **FLEXIBILITY:** It can be used by social service agencies, public agencies, mentor orgs., community health centers, food banks, halfway homes, hospitals, & more. It can support initiatives for family preservation, foster care (incl. youth aging out), food security, substance use disorder recovery, reentry from jail/prison to communities, maternal (pre-natal/post-partum) care, pediatrics, & more.

